



December 2025

This time of year, we're encouraged to count our blessings. It's good advice to follow year-round, wouldn't you agree?

We've counted 1,145 reasons so far this year that remind us that it's a wonderful life...

♥ 555 donors ♥ 233 grants ♥ 118 scholarships ♥ 101 grantees ♥ 64 students ♥ 61 volunteers ♥ 12 board members ♥ 1 amazing community

Together, we've invested \$1.35M in Rush County through grants and scholarships in 2025 - amazing! We're thankful for YOU, friends - today and always.

Remember in the Christmas classic, *It's a Wonderful Life*, what the angel Clarence said to George Bailey when he was wondering what it would be like if he had never been born? *"Each man's life touches so many other lives."*

Being a part of RCCF means you can't help but affect others' lives. And not just today but for generations to come. **Your kindness matters and ALWAYS will. Happy holidays!**

GIFT VIII Update: Rural Revitalization Progress



BLIGHT ELIMINATION

Six parcels have been demolished, cleared, and prepped for redevelopment opportunities. Those properties will be listed for sale to developers in early 2026.

We have closed on 5 more blighted properties, with demolition planned in the coming months.

COUNTY COORDINATOR

Phil Kuhn has joined our team to work as a county coordinator, involved in moving along all components of the GIFT VIII work.

Need a refresher on the \$5M GIFT VIII grant and activities?

[FIND IT HERE](#)

Donor Impact: Helen & Jim Ewing Fund

**2025
EWING FUND
IMPACT
\$29,393.80**

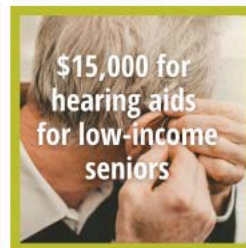
Rush County Community
Assistance Food Pantry



School-Based Pantries at
MES & RCHS



Psi Iota Xi
Sorority



If you've ever wondered what makes a gift to RCCF unique, here's a powerful example.

Jim and Helen Ewing were small business owners and dedicated volunteers. Later in life they relied on Meals on Wheels. In 2014 Jim created the **Helen and Jim Ewing Fund** in memory of Helen and to repay that kindness.

Their fund supports food assistance and essential services for older adults. With grants from the Ewing Fund, local food pantries offer fresh produce and milk, and low-income seniors have received critical items like hearing aids.

After Jim's passing, RCCF received the remainder of his estate in 2016. **The Ewing Fund has granted \$227,292 in just 11 years – that's equal to 42% of Jim's total gifts - already!**

The impact of Jim's generosity continues to grow because his fund is permanent, or endowed. **Yours does, too, friends. Every gift is still making a difference today!**

Match Update: Double Your Love for the LCC

SUPPORT THE LOVE COMMUNITY CENTER FOREVER
WITH A GIFT TO THE SCHROEDER FUND TODAY!

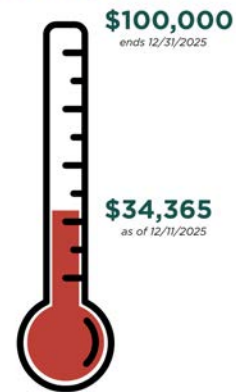


At least one thermometer is rising in Rush County! Thank you for your gifts to the [Schroeder Fund](#) in support of the Love Community Center.

We still need your help! It's not too late to make a difference forever, but time and this opportunity are running out on 12/31 at 11:59pm. Double your impact and help earn the \$100,000 match today!

[DOUBLE MY GIFT](#)

Schroeder Fund for the LOVE COMMUNITY CENTER
MATCH PROGRESS



 [Keep an eye on the progress with our new countdown timer.](#)

Ways to Give: Non-Cash Options



Did you know there are ways to support RCCF without dipping into your bank account? A **QCD (Qualified Charitable Distribution from your IRA)**, **stock transfer**, or **gift of grain** may make the best sense for you. Plus, there's an easy way for **any Kroger customer** to give back, too.

[LEARN MORE](#)

Grantee Update: RCHS Holcad and Lions Live



Rushville Consolidated High School: \$667.20 from [Rush County Education Fund](#) | \$3,600 from [Kenneth & Charlotte Brashaber Teacher Enhancement Fund](#)

RCHS teachers Lindsay Tillison and Amy Fox took 16 Holcad and Lion's Live students to the National High School Journalism Convention in Nashville, Tennessee November 13-16.

Jaydah Wallace earned Honorable Mention in Broadcast Commercial/PSA and Brylee Shaver earned Superior in Graphic Design: Illustration in competition with students both nationally globally. Congratulations to both!

All students attended special critique sessions, receiving feedback from both judges and peers, and came away with new knowledge.



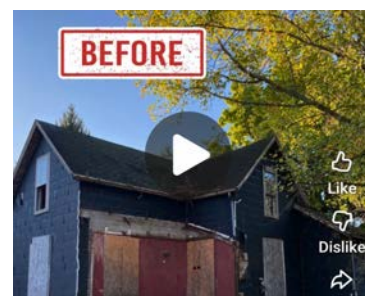
📌 **CIRCLe Membership Open:** Due 12/31/2025, Make a \$300 gift and mail/drop off: RCCF, 117 N Main St, Rushville, IN 46173 or [give online](#).

📌 **Scholarship Application is Open:** Due 2/15/2026, 11:59pm: [Learn more/get started](#).

📌 **Rush County Community Calendar:** [Find and submit local events](#).

ICYMI (In Case You Missed It)

Here are the top stories from last month.



**2025 Community
Grants Awards Total
\$182,880**

**\$300 CIRCLe
Memberships Open &
Due 12/31**

**GIFT VIII Update: From
Blight to Bright**

What Will Your Legacy Be?



A bequest is the simplest way to make a legacy gift. **You can leave a percentage or remainder of your estate, like Jim Ewing did, or a specified amount to RCCF in your will or trust.** Bequests allow you to care for your loved ones and support your community forever.

[LEARN MORE](#)

November Tribute Gifts

Each gift you make in memory or in honor of a loved one supports Rush County forever. We are grateful for your kindness and generosity!

In Memory of:

Alice Ruth Wiley, Glen Wiley, and
Lauren Alice Wiley
Betty Green
Bill Griffis
Bob and Carole Shields
Charles Niccum
Dale Schwering
Donna Brewer
Dorothy Phillips
Edna Moster

Michael Clifford
Norbert Harpring
Paul W Barada
Phil Mitchell
Pippa Flanary
Richard Anthony
Rick Levi
Robert & Virginia Waltz,
Joe Y. & Edna Columbe,
David R. Columbe

Eleanor Yager
Evelyn Cross Dean
Jim Dunham
Jim Payne
Jim Wicker
Jo Ellen Winkler
Lou and "Pg" Barnard
Marcus Gordon
Margery Henderson

Ron Hardwick
Rosemary Kinnett
Scott Brooks
Suzanne Northam Hazelett
Tanya VanOsdol
Tim Harcourt
Virginia Willkie
Wilma Jo Kile

In Honor of:

Barbara White
Bill Herdrich
Dan Harris
Dave and Barb Malson's 40th
Anniversary
Jan Niehoff's 90th Birthday
Kaleb and Magdalena Schindler

Nancy Mitchell
Nancy O'Dell
Ross Sickbert
Scarlett Lux
Scott Spaeth
Terry Smith

KEEP IN TOUCH



Rush County Community Foundation | 117 N. Main Street | Rushville, IN 46173 US

[Unsubscribe](#) | [Update Profile](#) | [Constant Contact Data Notice](#)



Try email marketing for free today!